



# City Surveillance

by Agent Video Intelligence

Suspicious Activity in Public Areas >>



Facility & School Protection >>



Illegal Dumping >>



Urban Traffic Management & Road Safety >>



Parking Enforcement >>



DETECT >>

DETER

SITUATIONAL AWARENESS

FORENSIC SEARCH

OPERATIONS

CONTACT US >>



[Back to main page](#)

**savvi**<sup>™</sup>

Automated video analysis  
for the immediate detection and  
extraction of events and valuable data  
from surveillance footage

Replaces the manual and time-consuming  
tasks traditionally employed to monitor live  
video feeds or sift through  
recorded video

## DETER

Warn approaching  
intruders, to prevent  
breaches and attacks

## DETECT

Detect incidents  
in real-time to enable  
immediate responses,  
as the event unfolds

## FORENSIC SEARCH

Analyze and retrieve  
recorded video to  
pinpoint targets  
(people / vehicles /  
objects) and  
events

## SITUATIONAL AWARENESS

Review near real-time  
video to inform  
incident responses

## OPERATIONS

Extract statistical data  
from recorded video to  
enhance city  
management and  
operations





[Back to main page](#)

## *Suspicious Activity in Public Areas*

- Detect suspicious daytime and after-hours activity, such as unauthorized movement in secured areas, loitering, grouping and more
- Detect crowding, especially for nighttime policing
- Detect events that require immediate responses, such as vehicles driving against the traffic flow, vehicles illegally parked near high-value or sensitive targets, abandoned objects
- Execute searches for post-event analysis of specific people / incidents
- Inform operational responses by providing situational awareness and real-time information about suspects (people / vehicles) as an incident unfolds







[Back to main page](#)

## Facility & School Protection

- Detect perimeter intrusion at sensitive sites and loitering outside schools
- Detect unauthorized access at public sites such as electricity substations, telephone exchanges
- Protect assets by alerting to illegal trespassing and assets being removed
- Search for people or vehicles in post-event analysis phase
- Inform operational responses by providing situational awareness and real-time information about suspects (people / vehicles) as an incident unfolds
- Count people in high traffic areas (public buildings) in order to provide better policing and monitoring at busy times







[Back to main page](#)

# Illegal Dumping

- Real-time detection of illegal dumping to catch and prosecute perpetrators
- Combine video analytics with IR illuminators for night time detection of illegal dumping
- Search recorded video from multiple cameras at different intersections / locations to identify vehicles involved in dumping







[Back to main page](#)

# Urban Traffic Management & Road Safety

- Detect vehicles parked in highway shoulders and other illegally parked vehicles
- Detect pedestrians in highway shoulders or near train tracks
- Monitor traffic congestion to be alerted to traffic blockages / slowdowns
- Manage tunnels including alerts for objects dropped from vehicles, pedestrians walking in the tunnel, and traffic congestion
- Count and analyze pedestrian and vehicle traffic patterns for traffic management planning (traffic lights, new roads, better traffic flows)



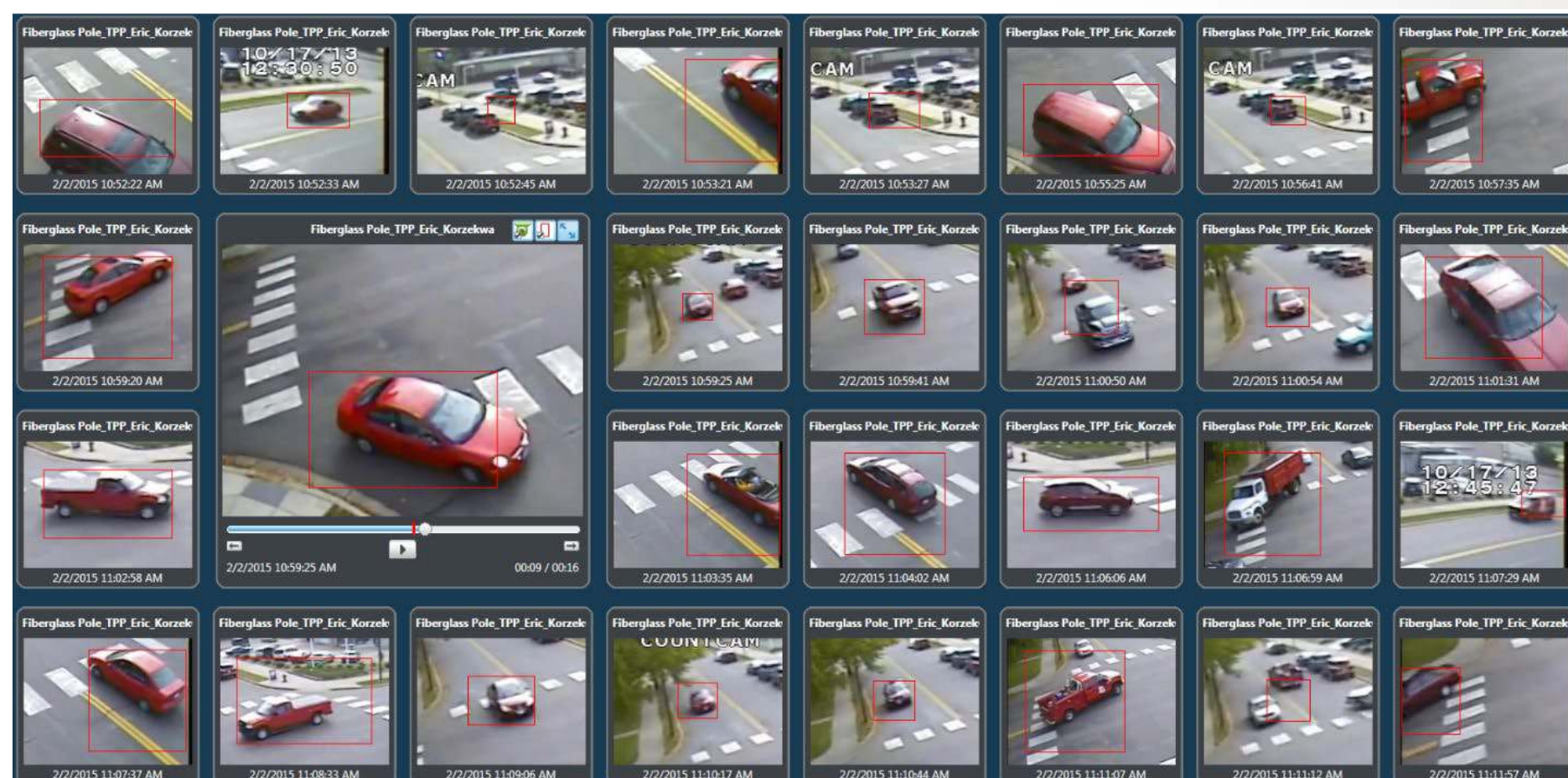




Back to main page

# Parking Enforcement

- Alert for illegal parking in specific areas
- Detect traffic obstacles
- Execute searches for specific vehicles (according to size / color)







Back to main page

# *Agent Video Intelligence*

[sales@agentvi.com](mailto:sales@agentvi.com)

[www.agentvi.com](http://www.agentvi.com)

