

Extra Scrubbing Capacity for Service Providers Right When They Need It

In today's threat landscape, even Service Providers experience disruption from cyber-attacks. Today's attacks can reach 100's Gbps of traffic, often too large to route internally from points-of-presence to existing scrubbing centers due to backbone or link capacity. Radware's Cloud DDoS Peak Protection Service is the first to deliver service providers protection from high volume DDoS attacks through excess scrubbing capacity specifically at their time of need.

Volumetric attacks are on the rise. According to Radware's Global Network & Application Security Report, one in seven attacks is now larger than 10Gbps and DDoS Internet pipe saturation is the number onetype of attack observed. Delivering reliable service delivery platforms depends upon effectively protecting the infrastructure from volumetric DDoS attacks. These attacks are putting an increased strain on service providers' infrastructure and forcing difficult decisions about making capital investments in additional backbone or scrubbing capacity.

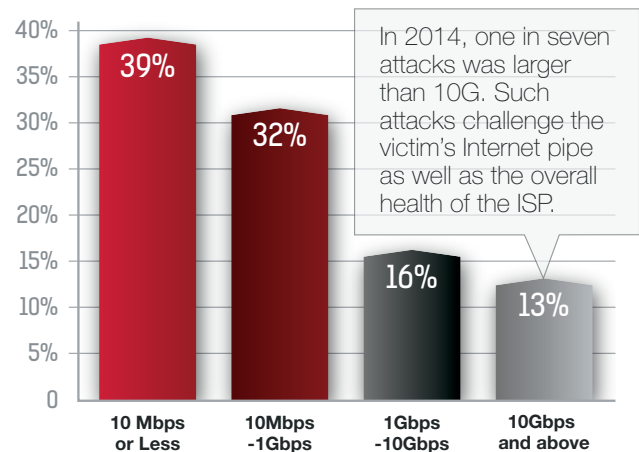


Figure 1: Attack Size on the Rise, Radware's Global Network & Application Security Report

Cloud DDoS Peak Protection Service

Now, there is an alternative to expensive hardware and link capacity upgrades. Radware Cloud DDoS Peak Protection Service provides on-demand access to additional DDoS mitigation capabilities leveraging a global network of scrubbing centers with over 2 Tbps of DDoS mitigation technology. Peak protection service extends your DDoS scrubbing capacity for protection from the largest known volumetric attacks by providing capacity on top of existing mitigation investments.

Peak Protection delivers protection from volumetric attacks for 24 hours with the option to extend protection for longer attacks. There is no limit to the number of attacks that can be mitigated through the service once the service is activated.

Peak Protection eliminates the need for Service Providers to make large capital investments in additional scrubbing capacity or operational investments in upgrading links in order to route volumetric attacks to their scrubbing centers (see Figure 2).

Peak Protection includes the support of Radware's Emergency Response Team (ERT) who provide 24/7 security services for customers facing a denial-of-service (DoS) attack or malware outbreak, help fight the attack with the customers during the entire campaign both on-premise and in the cloud. Radware ERT supports Peak Protection customers through real-time analysis of attacks and immediate signature generation for unknown, zero-day threats.

Service Provider with 10Gbps of link and mitigation capacity seeks protection from 300Gbps attack

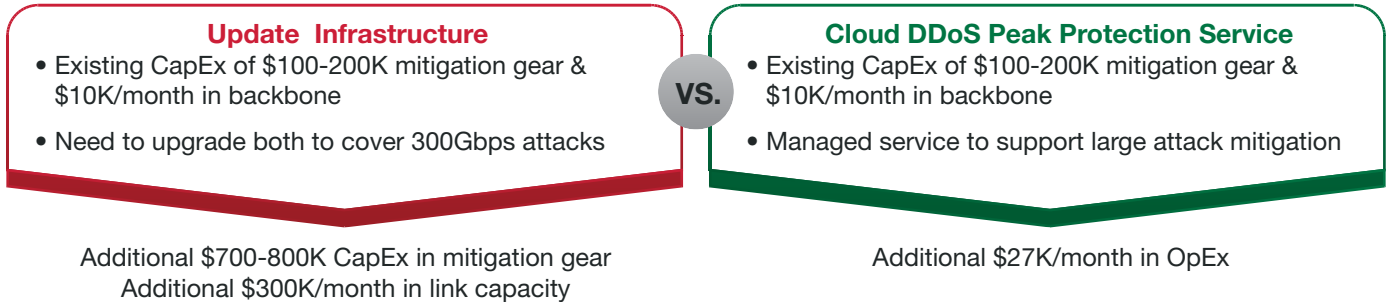


Figure 2: Cost Analysis of Expanded Links in Response to Volumetric Attacks

Experienced Provider of DDoS Mitigation Services

Radware's technology and attack mitigation solutions have a long history of providing superior protection to many leading service providers. Five of the world's Top 10 largest telecommunication companies and 2 of the world's Top 5 cloud service providers already leverage the solution for protection. Radware's attack mitigation solution is based on award-winning technology that protects an organization's infrastructure against network and application downtime, application vulnerability exploitation, and other types of attack. The solutions offer protection with the shortest mitigation time and broadest attack coverage, and are designed to optimally block multiple attack vectors occurring in parallel.

Peak Protection leverages Radware's geographically distributed scrubbing centers, supporting mitigation closer to the source of attack sources, service provider data centers, and legitimate users trying to utilize customers' services.

Additionally, Peak Protection is eminently scalable to address the continued growth of volumetric attack size and frequency, with currently over 2 Tbps of mitigation capability. As the manufacturer of industry-leading cyber-attack mitigation technology, Radware can easily and effectively add scrubbing capacity to its scrubbing centers as needed to ensure continued protection of customers. Radware has built scrubbing centers at 4 strategically selected near major peering points to serve major markets with minimal latency, and is constantly expanding and upgrading its network based on growth of customer base and changes in cyber-attack trends.

Benefits

- Over 2Tbps of on-demand link and attack mitigation capacity
- Avoids capital expense in additional mitigation gear and link capacity upgrades
- Access to deep subject-matter expertise and support of Radware's Emergency Response Team (ERT)
- Ability to support individual customer assets within Service Provider multi-tenant environments
- Globally dispersed scrubbing centers supports flexible traffic routing based on source of attack and/or location of Service Provider's SOC
- Time to mitigate capabilities of 5 minutes

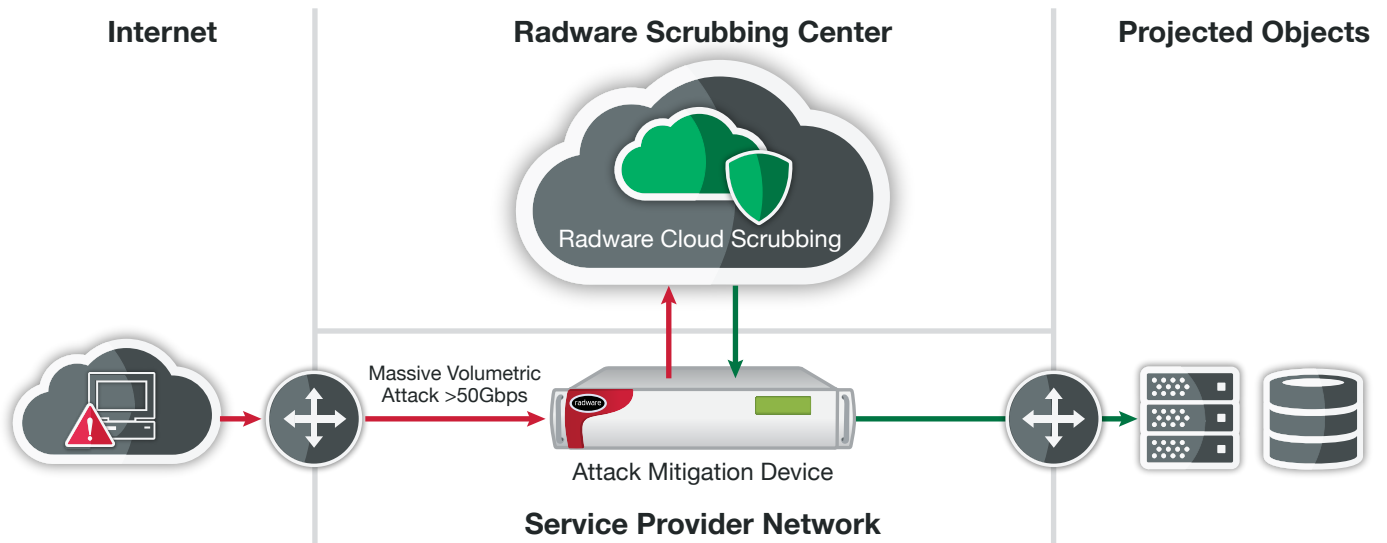


Figure 3: Radware Peak Protection Architecture

Enhance and Extend Existing Security Services

Many Service Providers provide some DDoS scrubbing services to customers but most lack the link and scrubbing capacity to handle very large volumetric attacks.

Service providers seeking to deliver security services to customers cannot ignore the prevalence of volumetric DDoS attacks.

Peak Protection is designed to support service providers' multi-tenant environments through customized protection for individual customer assets without limitations on the number of customers through the service. Additionally, end-customers can be given access to the online portal to monitor attack mitigations and receive alerts and reporting.

About Radware

Radware® (NASDAQ: RDWR), is a global leader of **application delivery** and **cyber security** solutions for virtual, cloud and software defined data centers. Its award-winning solutions portfolio delivers service level assurance for business-critical applications, while maximizing IT efficiency. Radware's solutions empower more than 10,000 enterprise and carrier customers worldwide to adapt to market challenges quickly, maintain business continuity and achieve maximum productivity while keeping costs down. For more information, please visit www.radware.com.

Radware encourages you to join our community and follow us on: [Facebook](#), [Google+](#), [LinkedIn](#), [Radware Blog](#), [SlideShare](#), [Twitter](#), [YouTube](#), [Radware Connect](#) app for iPhone® and our security center [DDoSWarriors.com](#) that provides a comprehensive analysis on DDoS attack tools, trends and threats.

Certainty Support

Radware offers technical support for all of its products through the Certainty Support Program. Each level of the Certainty Support Program consists of four elements: phone support, software updates, hardware maintenance, and on-site support. Radware also has dedicated engineering staff that can assist customers on a professional services basis for advanced project deployments.

Learn More

To learn more about how Radware's integrated application delivery & security solutions can enable you to get the most of your business and IT investments, email us at info@radware.com or go to www.radware.com.

This document is provided for information purposes only. This document is not warranted to be error-free, nor subject to any other warranties or conditions, whether expressed orally or implied in law. Radware specifically disclaims any liability with respect to this document and no contractual obligations are formed either directly or indirectly by this document. The technologies, functionalities, services, or processes described herein are subject to change without notice.

©2016 Radware Ltd. All rights reserved. Radware and all other Radware product and service names are registered trademarks or trademarks of Radware in the U.S. and other countries. All other trademarks and names are property of their respective owners. The Radware products and solutions mentioned in this document are protected by trademarks, patents and pending patent applications. For more details please see: <https://www.radware.com/LegalNotice/>